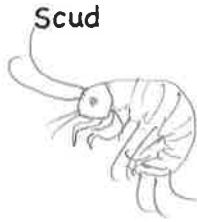


- flattened top to bottom
- 7 pair of legs
- similar to pillbugs on land



Scud

- flattened side-to-side
- shrimp-like
- 7 pair of legs
- side swimmers

Know Your Macros: MY GUIDE TO MACROS ID

Student: M. Clapp (7-3)
 School: CAM Academy
 Date: 9/16/13

Flatworm



- flattened body
- no segments
- usually has eyespots

Aquatic Earthworm



- round, segmented body
- small hair-like bristles

Mayfly



- 6 legs
- thorax is not divided
- gills on sides of abdomen
- 2 or 3 tails
- 1 pair of wing pads if present

families:

- Ameletid minnow
- Small minnow
- flat head
- spiny crawler
- prong-gilled

Snail



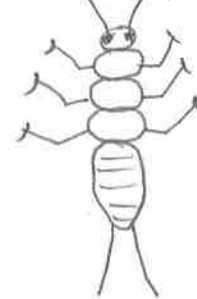
- hard spiral shell
- gilled snail = right-side opening
- pond snail = (lunged) left-side opening

Limpet



- low, dome-shaped shell

Stonefly



- 6 legs
- thorax has 3 parts
- only 2 tails
- no gills on abdomen
- 2 claws per leg
- 2 wing pads

families:

- golden
- little yellow
- little green
- little brown
- slender winter
- roach-like
- giant

Clam



- 2 shells attached at hinge
- soft bodies inside
- clams are smaller + more rounded

Mussel



- similar to clams
- flat, oblong + lopsided

Caddisfly

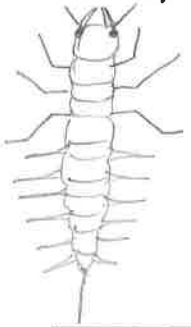


- 6 legs
- fleshy abdomen
- 2 prolegs with hooks at end of abdomen
- some build cases, some nets, some free-living

families:

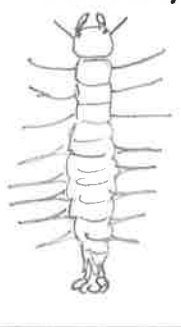
- Northern casemakers
- saddle casemakers
- Lepidostomatid c.m.
- humpless c.m.
- net-spinners
- free living
- fingernet

Alderfly




- large gill filaments along abdomen
- single long tail filament
- mouth has large pinchers

Dobsonfly




- long, flattened body with large filaments along abdomen
- end has 2 prolegs with pairs of claws

Water Strider



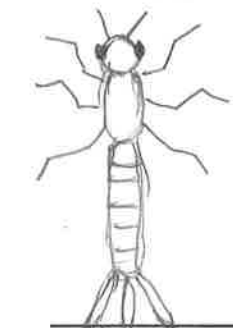
- "skate" around on top of water
- front legs grab prey

Water Boatman & Backswimmer



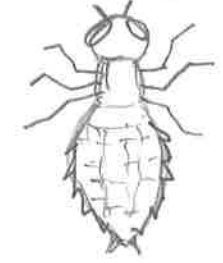
- oval body with oar-like legs
- backswimmer - swims upside down and can BITE!

Damselfly




- long, thin body
- 3 flat paddle-like gills at end
- large eyes

Dragonfly



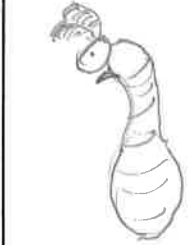
- elongated body
- oval abdomen tapers to a point
- large eyes

Midge




- small, worm-like with head + prolegs
- "twitchy" movement

Blackfly




- bowling-pin shape
- collapsible fans on head
- attach at end with hooks

~~Water~~ **Beetle**



- small, elongated bodies with hardened plates
- ^{short} 6 legs

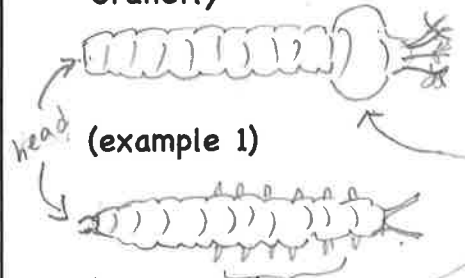
(larva)



- 3 body parts
- 6 legs w/ 2 claws
- both adult + larva are aquatic

(adult)

Cranefly




- fleshy, caterpillar-like bodies
- with or without swollen area or prolegs

(example 1)

(example 2)


Predaceous Beetle



- long, slender antennae
- tear-drop shaped body

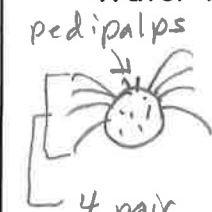
(adult)

Water Penny



- oval body covering, with head + legs underneath

Water Mite

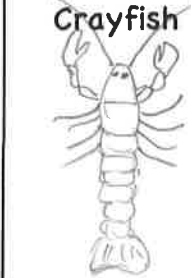


- small moving dots (1-3 mm)
- round bodies with 8 legs
- color: red, yellow, green --

pedipalps

4 pair of legs

Crayfish



- lobster-like
- 5 pair of legs, including 2 claws
- fan-shaped flipper at end of tail